

Threadless Headset

Instruction Manual

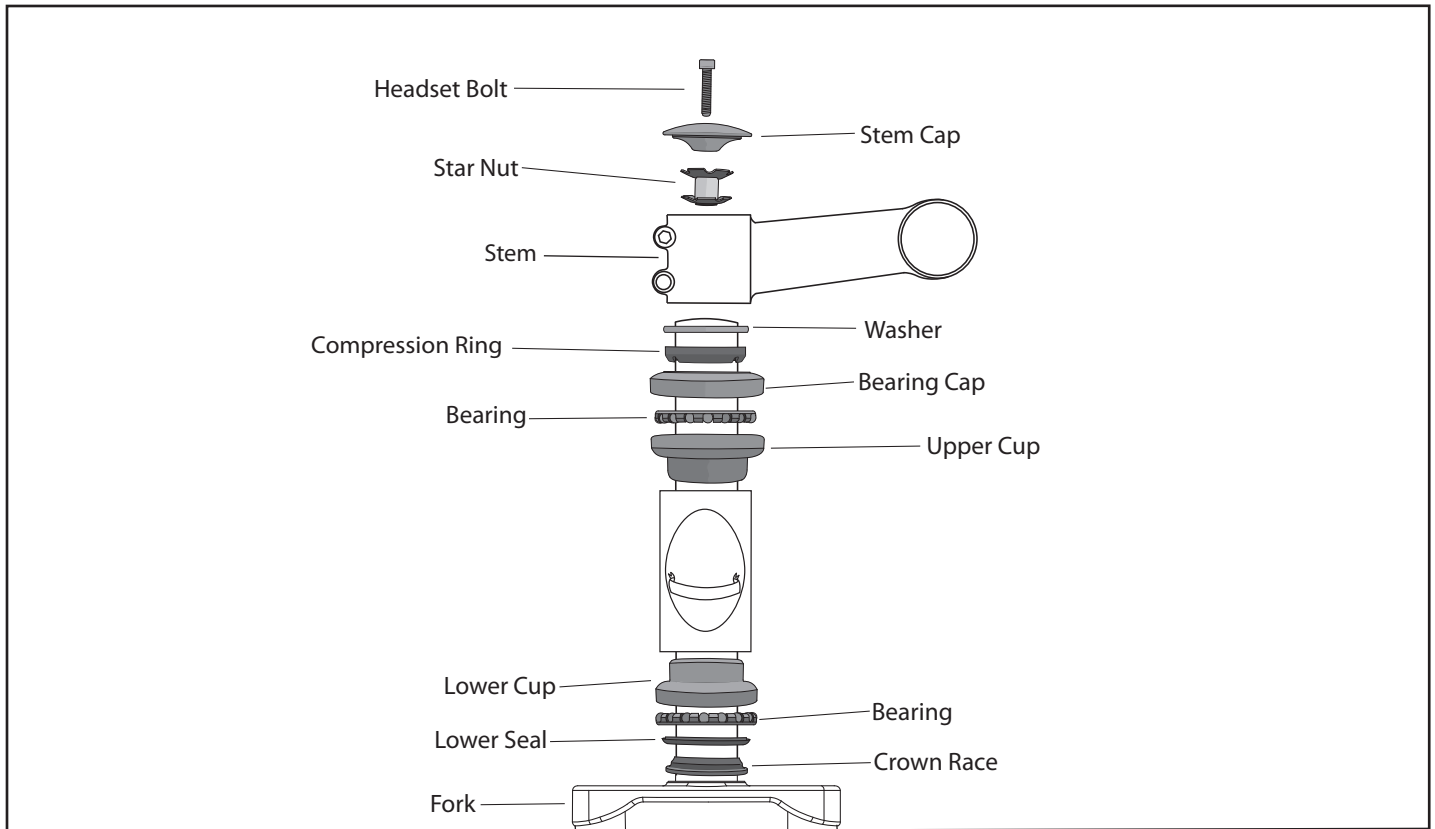
HS006

Please read all instructions before installing your new threadless headset.

Note: Installation requires specialized equipment to press fittings onto the steerer tube and into the head tube.

Warning

Failure to install headsets properly may result in damage to your bicycle, serious injury, and/or death.



Note: This package contains 2 sizes of crown race, 26.4mm and 27mm. Be sure to check the fork for appropriate sizing.

Installation

1. Install applicable crown race to fork using an appropriate press. Fitment should be flush and evenly seated.
2. Install upper and lower cups to the head tube using a headset press.
3. Using a nut setter, install the star nut into the steerer tube.
4. Place lower seal and bearing onto crown race and place steerer tube through the head tube.
5. Place upper bearing, bearing cap, compression ring, and washer onto steerer tube as shown.
6. Place stem onto steerer tube using appropriate spacers (Not included) to set height.
7. Install stem cap followed by the headset bolt.
8. Check that all fittings are flush with their respective mounting surfaces and that rotation is smooth.

SUNLITE