

Touring Brake Lever

Instruction Manual

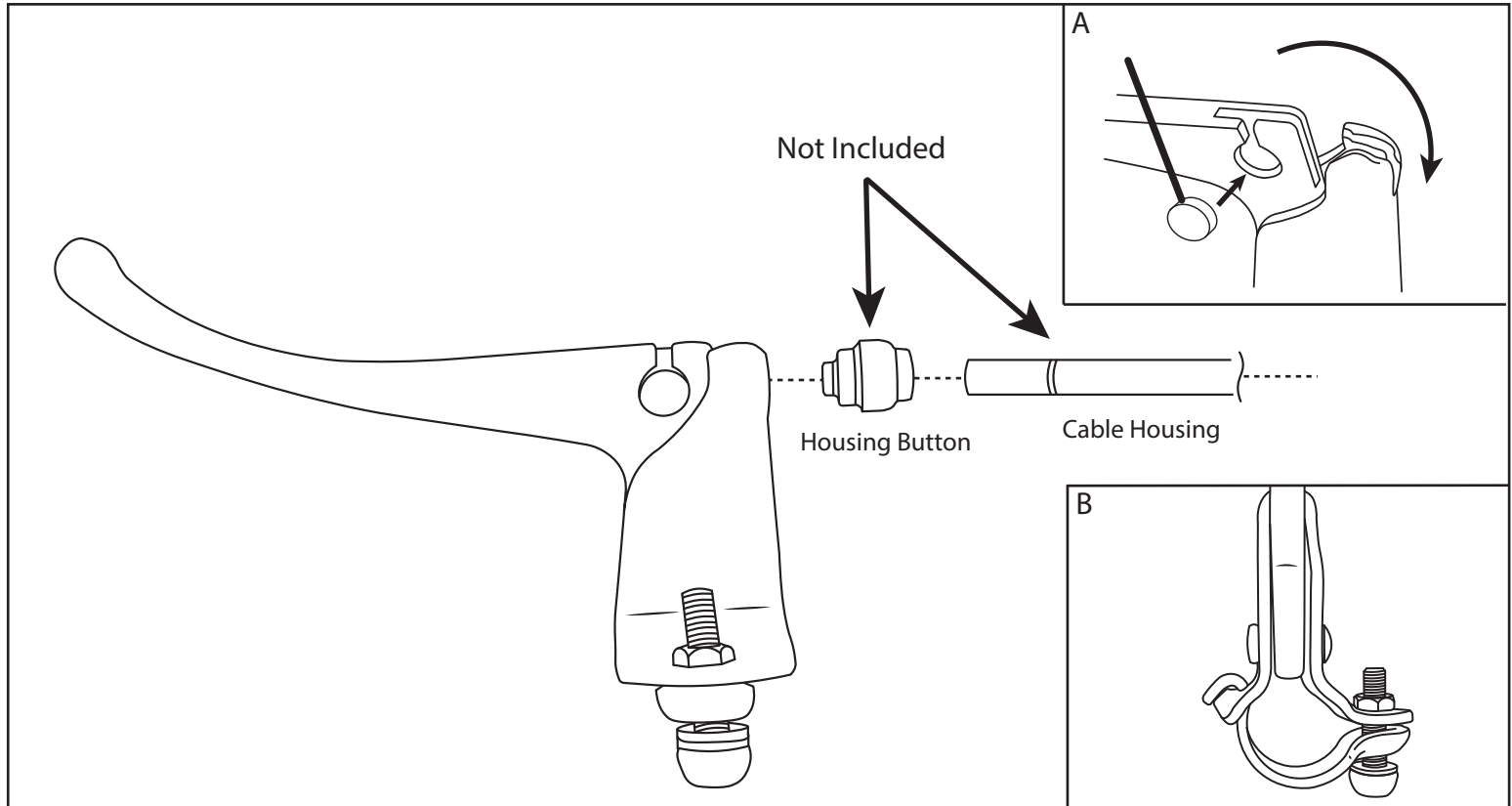
BL004

Please read all instructions before installing and using your brake levers.

Be sure to install your brake levers in a position that will be comfortable for your hands to operate them.

Warning

Failure to install brake levers properly may result in serious injury/death and or damage to your bicycle.



Installation/Use

1. Begin by attaching the brake level to the preferred spot on the handlebar. Do so by removing the bolt shown in figure B so that the hinged clamp may fully open, place on handlebar and replace the bolt and tighten to 5 -7Nm.
2. Install brake cable as shown in figure A , Inserting the barrel end of the cable into the opening then rotate into place though the slot on top of the lever.
3. Thread the cable through a housing button (Not Included) inserted into the round hole on the side of the lever and through the cable housing.
4. Install cable to brake caliper per manufacturer's instructions.
5. Check for functionality before riding.

SUNLITE